

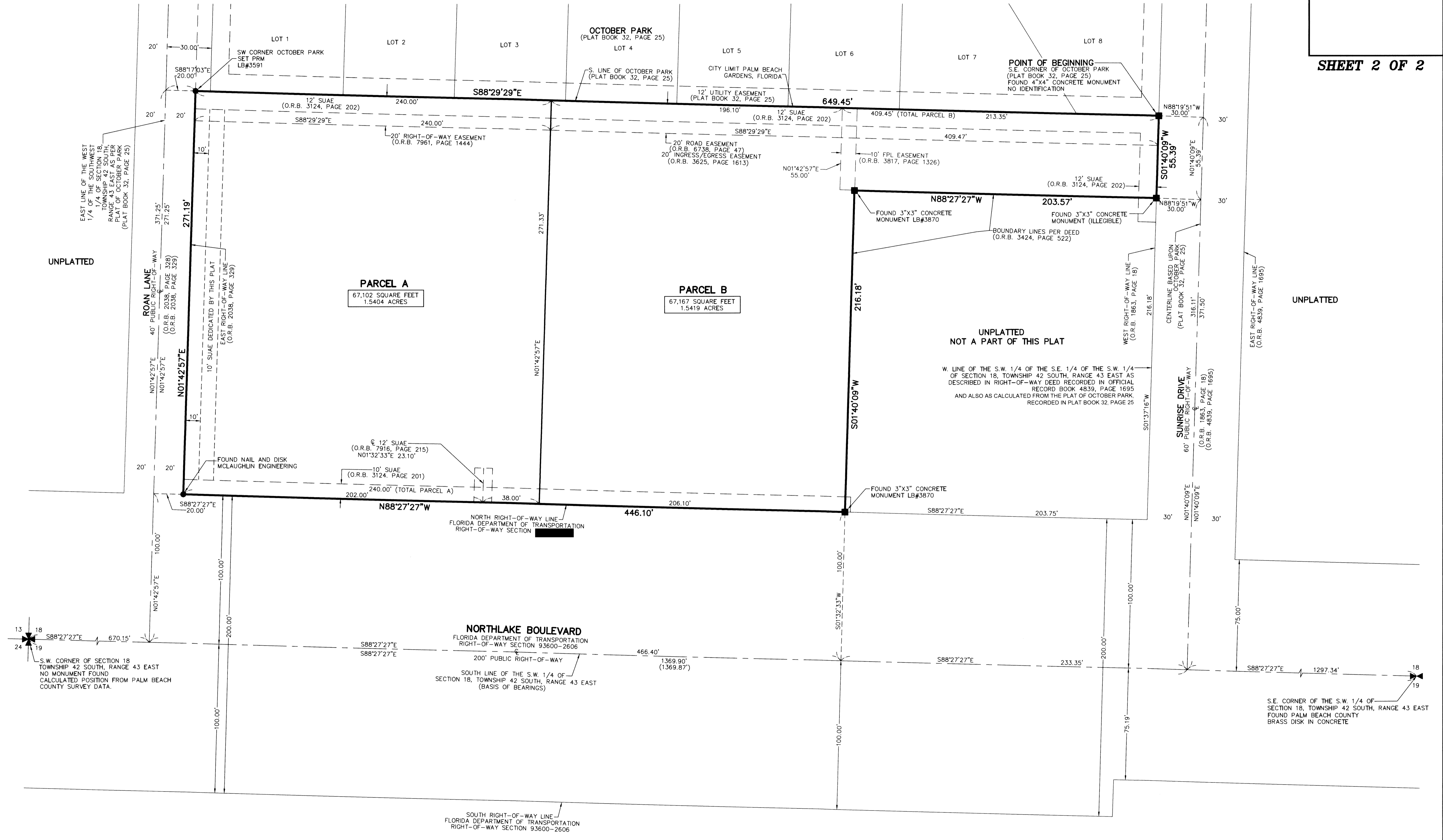
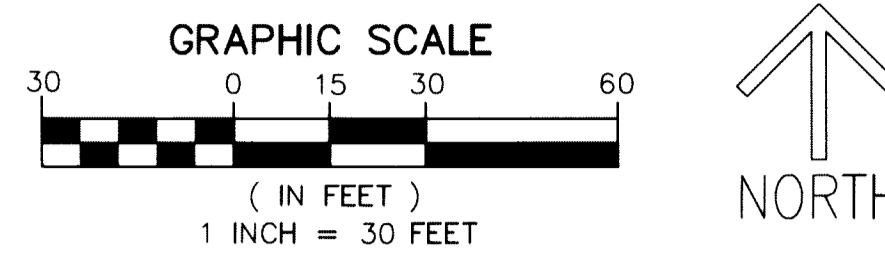
THIS INSTRUMENT PREPARED BY
 DAVID P. LINDLEY
 OF
CAULFIELD and WHEELER, INC.
 SURVEYORS - ENGINEERS - PLANNERS
 7900 GLADES ROAD, SUITE 100
 BOCA RATON, FLORIDA 33434 - (561)392-1991
 CERTIFICATE OF AUTHORIZATION NO. LB3591
 NOVEMBER 2018

NORTHLAKE ROAN SUNRISE PLAT

BEING A PORTION OF THE SOUTHWEST ONE-QUARTER OF SECTION 18,
 TOWNSHIP 42 SOUTH, RANGE 43 EAST,
 CITY OF PALM BEACH GARDENS, PALM BEACH COUNTY, FLORIDA

155

LEGEND/ABBREVIATIONS
 CL - CENTERLINE
 FPL - FLORIDA POWER & LIGHT CO.
 LB - LICENSED BUSINESS
 O.R.B. - OFFICIAL RECORD BOOK
 S.U.A.E. - SEACOAST UTILITY AUTHORITY EASEMENT
 U.E. - UTILITY EASEMENT
 ■ - DENOTES CONCRETE MONUMENT
 ● - DENOTES PERMANENT REFERENCE MONUMENT
 5/8" IRON ROD WITH CAP STAMPED "C&W PRM LB3591"



SHEET 2 OF 2